



# NorthernGrid

March 17<sup>th</sup>, 2026

ESIG Panel Presentation

By: Ben Hutchins

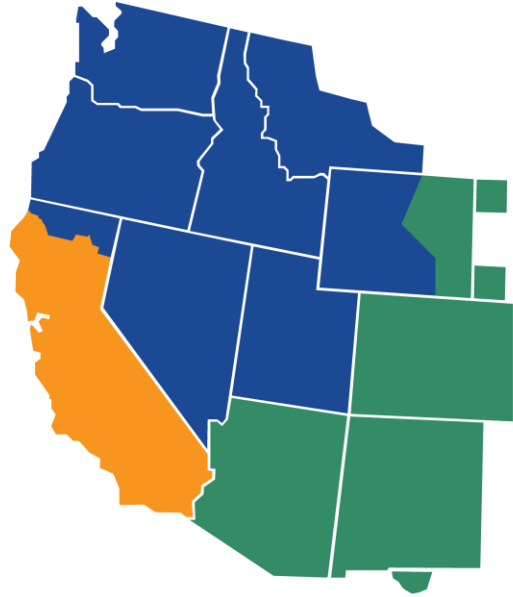


Voluntary, Large Participation

Addresses Required Regional Planning  
Enrolled Parties must participate in a regional planning process



Enrolled + Non-Enrolled



\*Boundaries are approximate





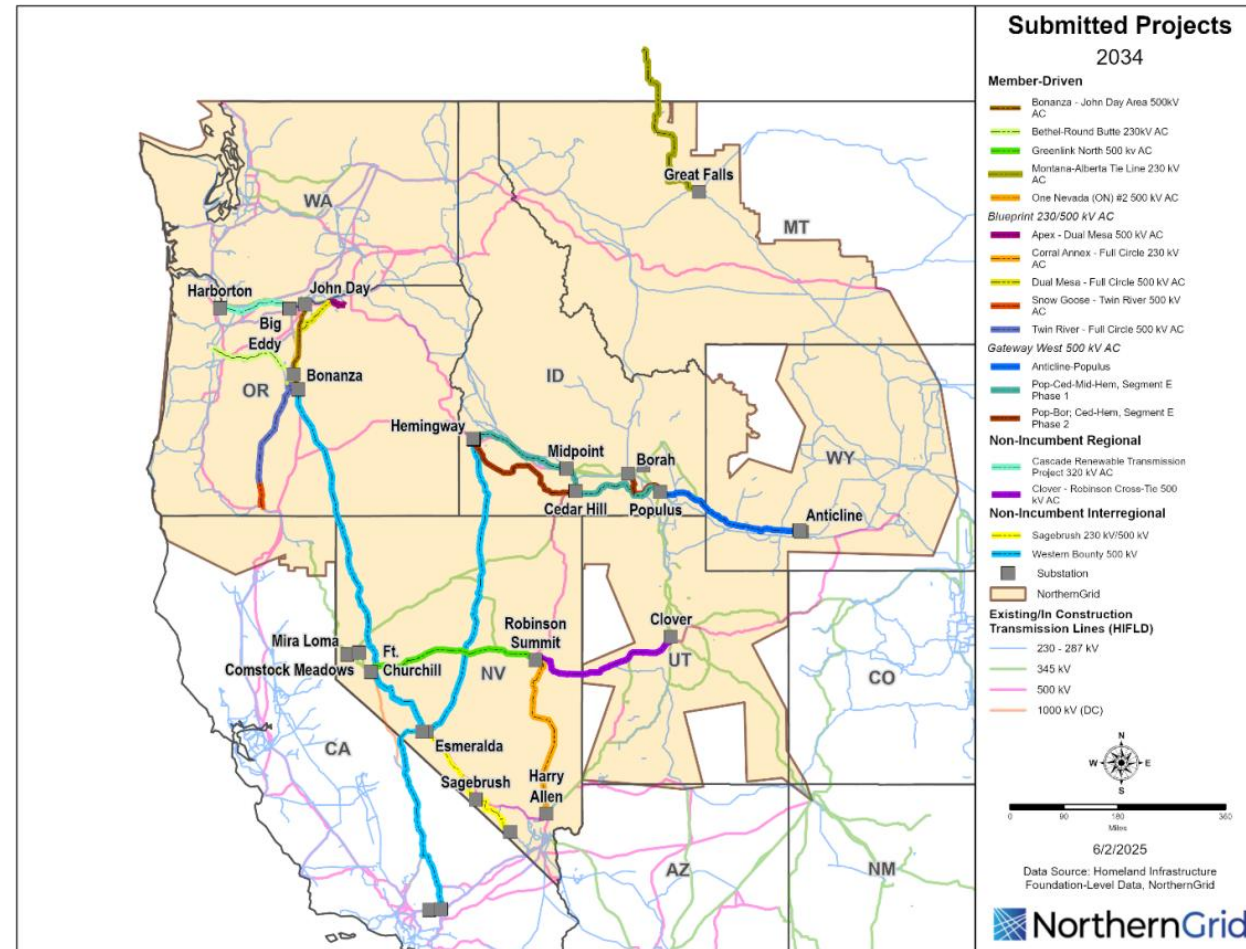
# NorthernGrid

- Roll-up of local area transmission plans
- Open and Transparent Process
- Analysis, Regional Combinations
- More efficient or cost-effective solution to meet needs

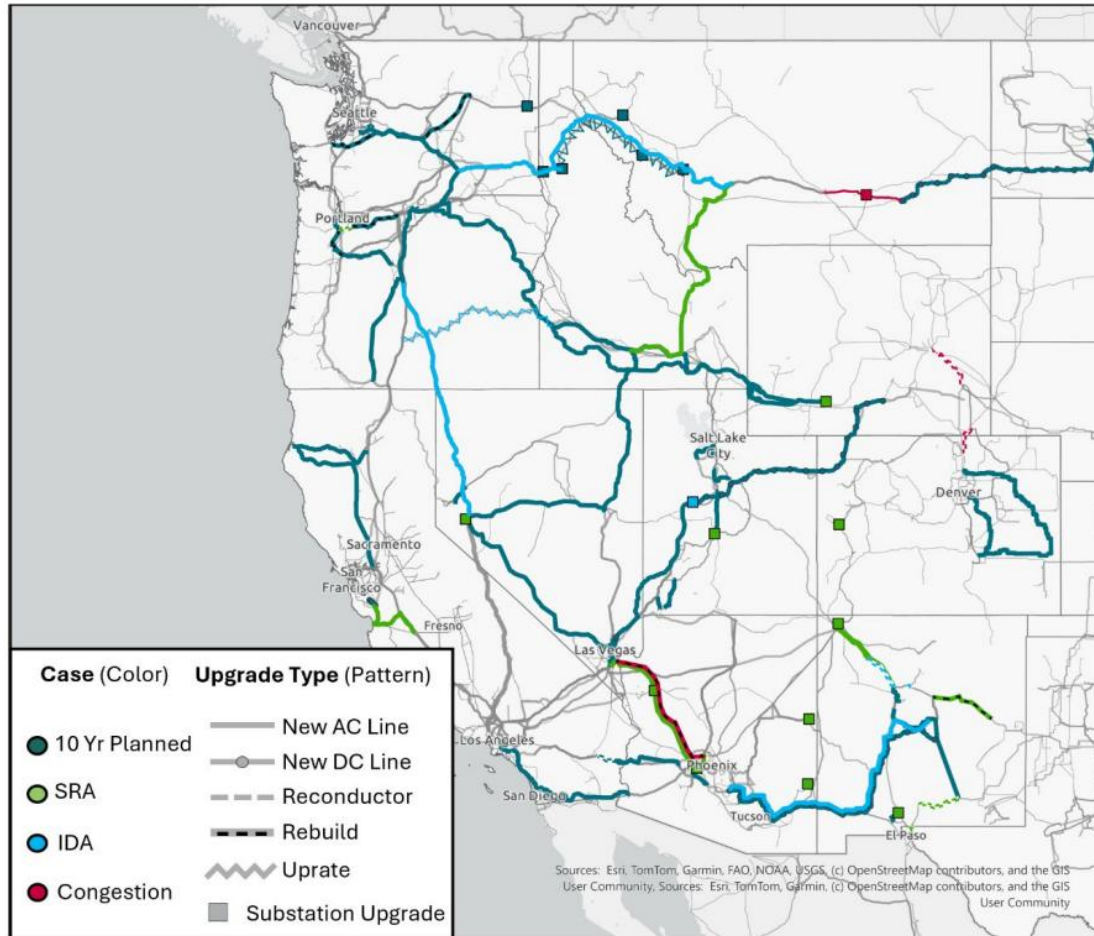
Learn More:

[www.NorthernGrid.net](http://www.NorthernGrid.net)

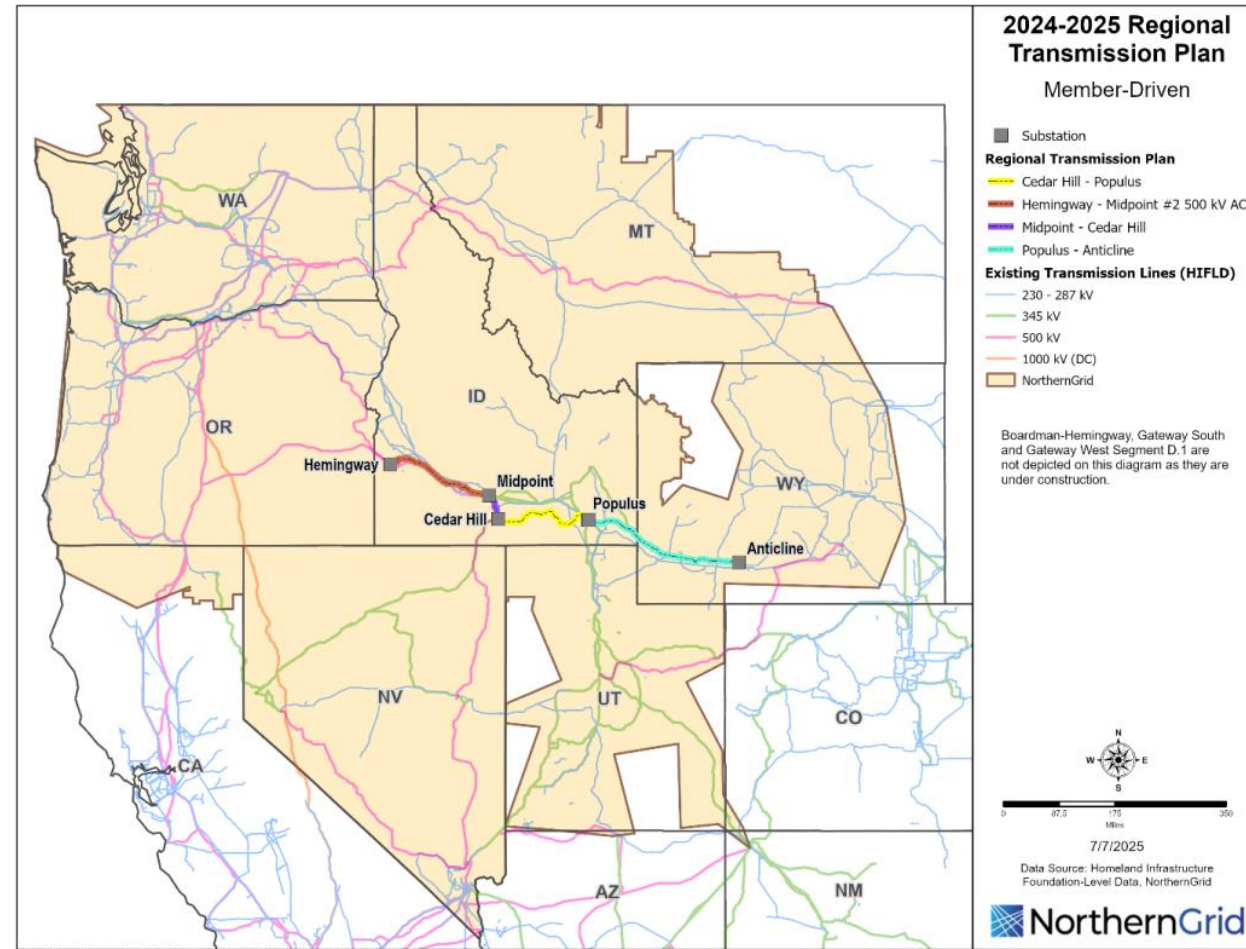
HOME NEWS EVENTS RESOURCES ABOUT SIGN IN **SUBSCRIBE**



Committed Projects (SWIP-N, B2H, etc) are modeled in-service as baseline projects in all regional combinations.



Feb 2026 WestTEC Report  
10-Year Transmission Portfolio



Nov 2025 NorthernGrid Report  
2024-2025 Regional Transmission Plan



Questions?