



# All Together – Working Together for a Reliable IBR Dominant Grid

Katie Iversen

Sr. Manager, Generator Modeling &  
Power System Studies

ESIG Spring Workshop 2026



# Presentation Overview

---

## Industry & Context

- Disruptors
- Drivers in Our Space
- Development of a Project

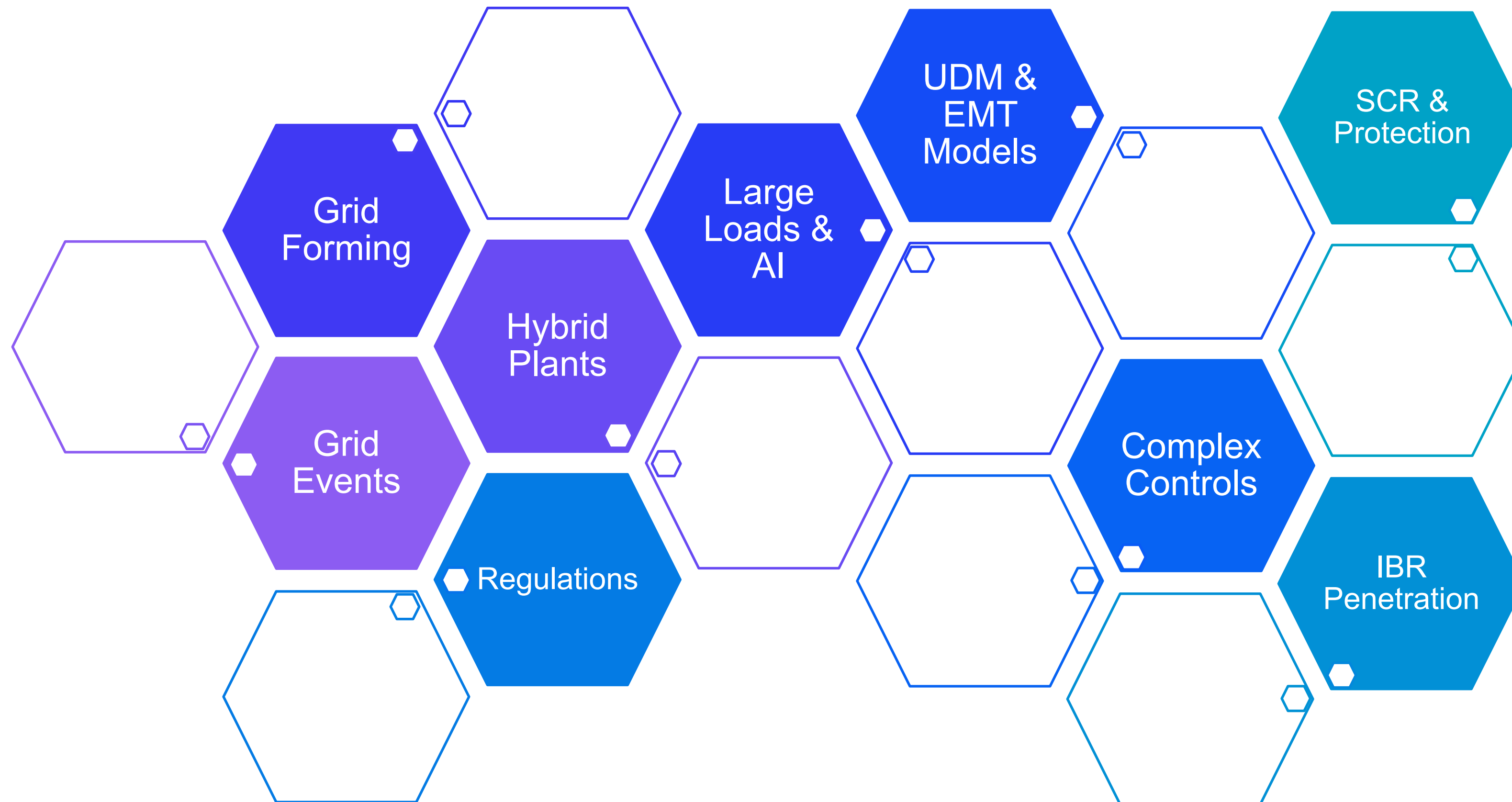
## Industry SWOT

- Strengths
- Weaknesses
- Opportunities
- Threats

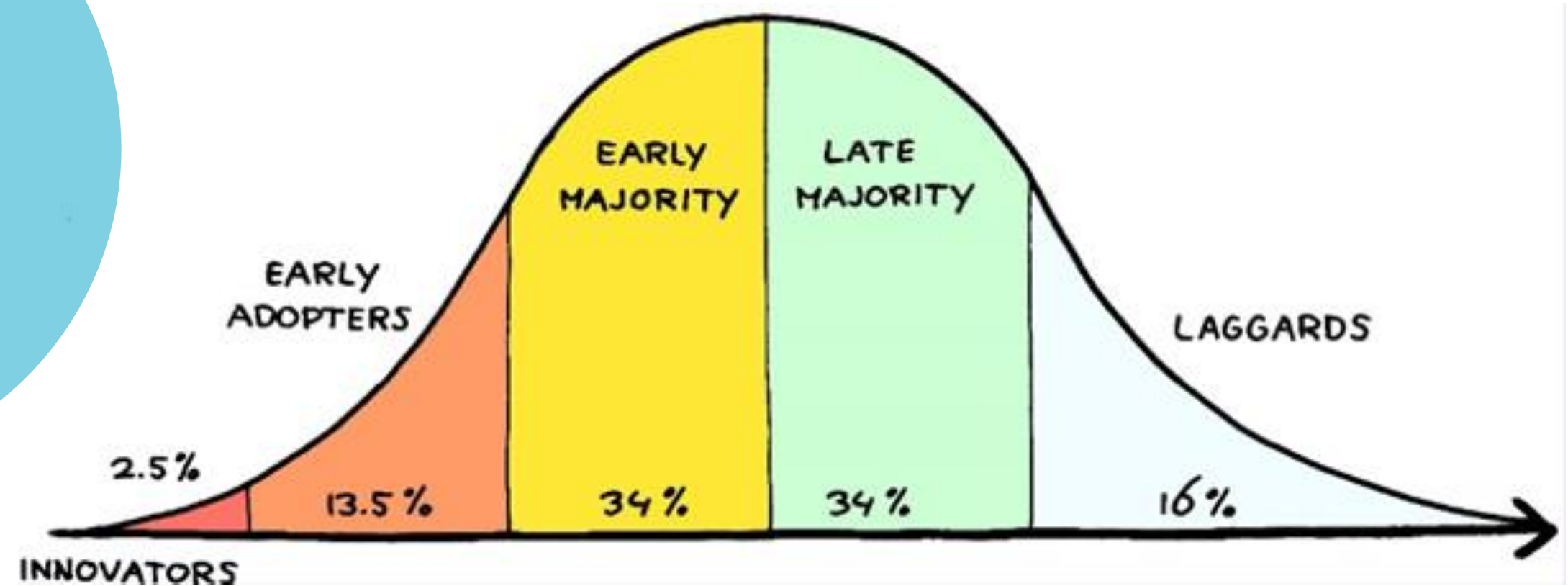
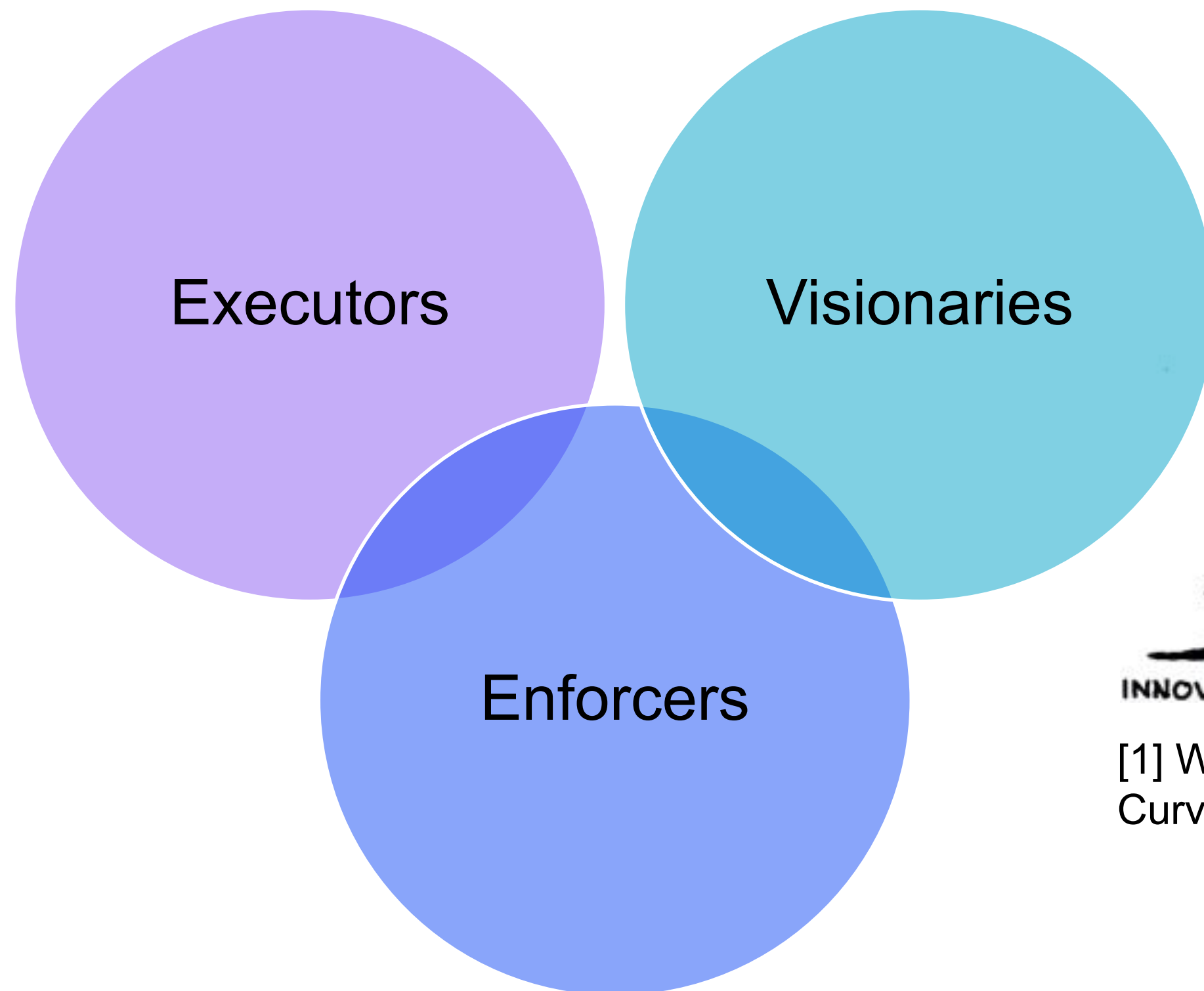
## Cognitive Factors

- Adapting to Change
- Dunning-Kruger Effect

# Industry Disruptors

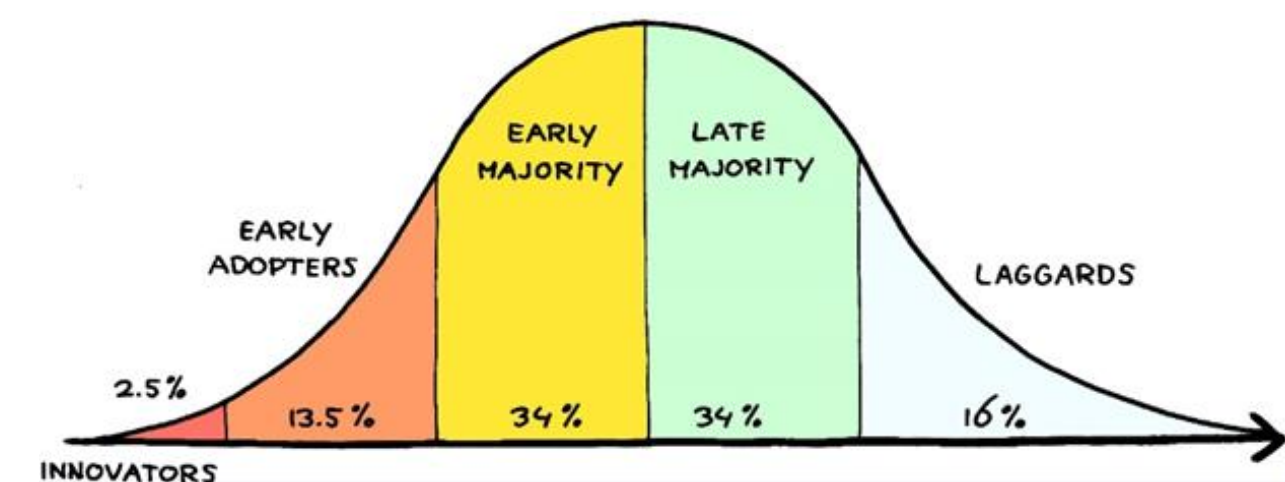
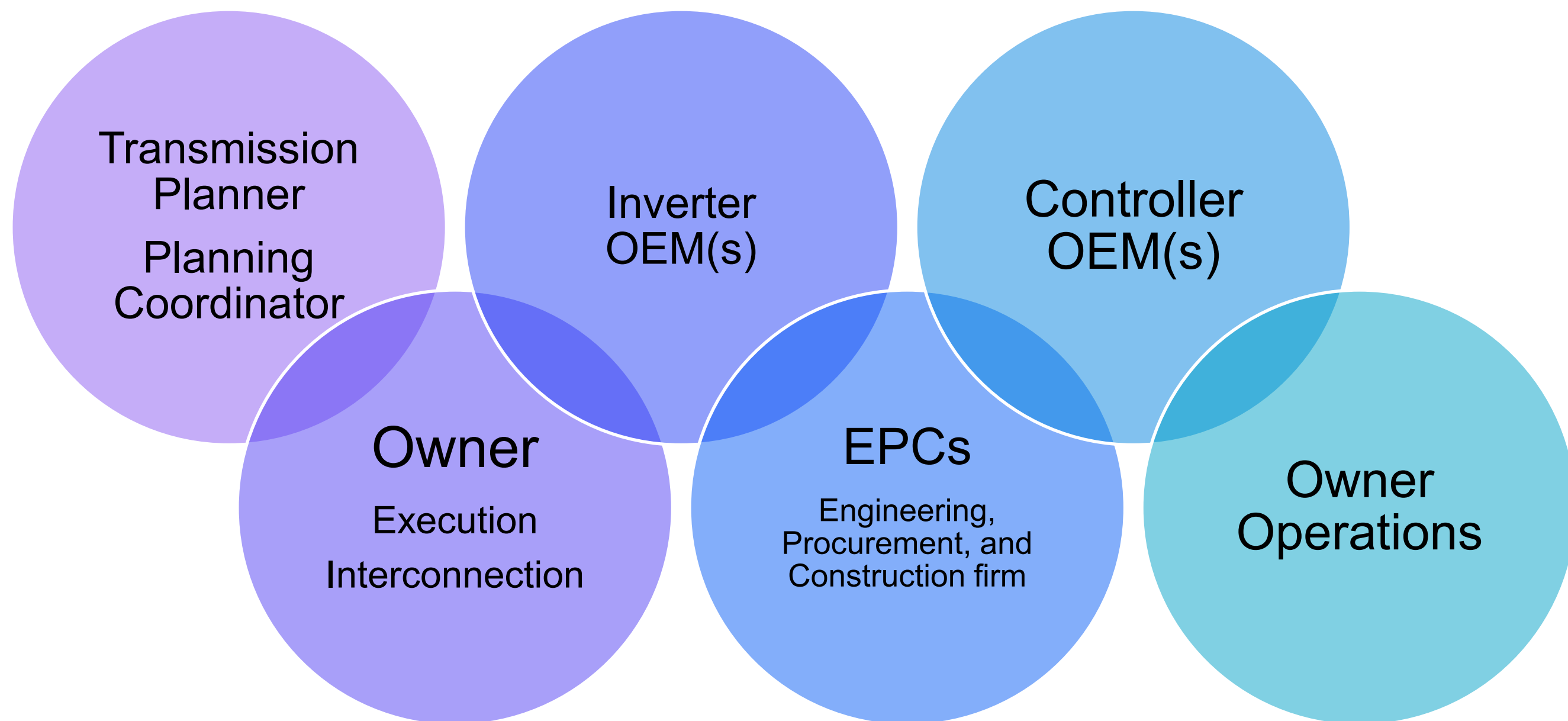


# Drivers in Our Space



[1] Worksite International, Ergonomics and the Technology Adoption Curve

# Development of a Project



- Each party follows the technology adoption curve [1]

# SWOT Analysis

## Strengths

-  LEARN
-  DEFINE
-  ENGAGE
-  ADAPT

## Weaknesses

-  INCONSISTENT
-  IMMATURE
-  OPAQUE
-  FRAGILE

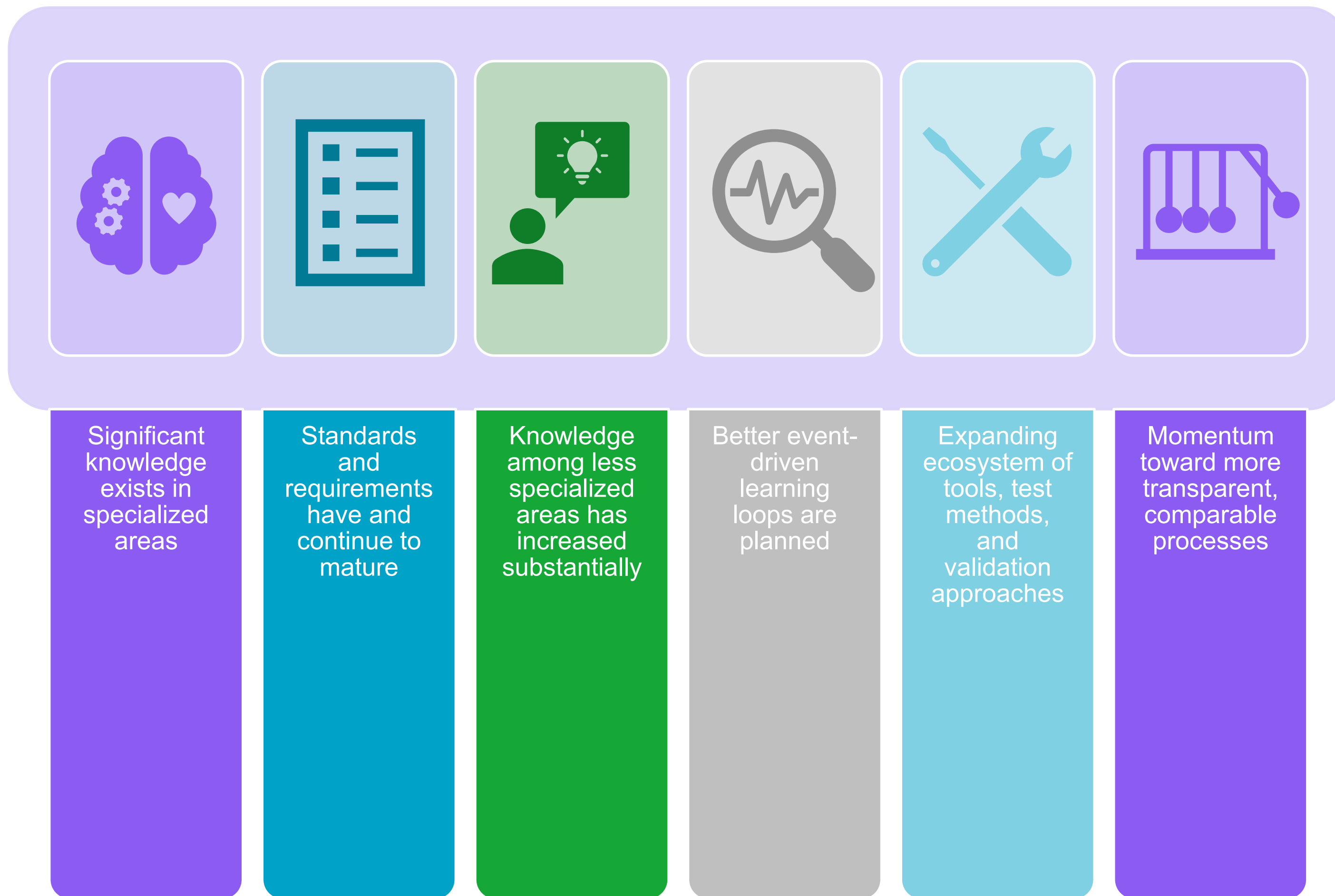
## Opportunities

-  ALIGN
-  TRUST
-  SCALE
-  SUSTAIN

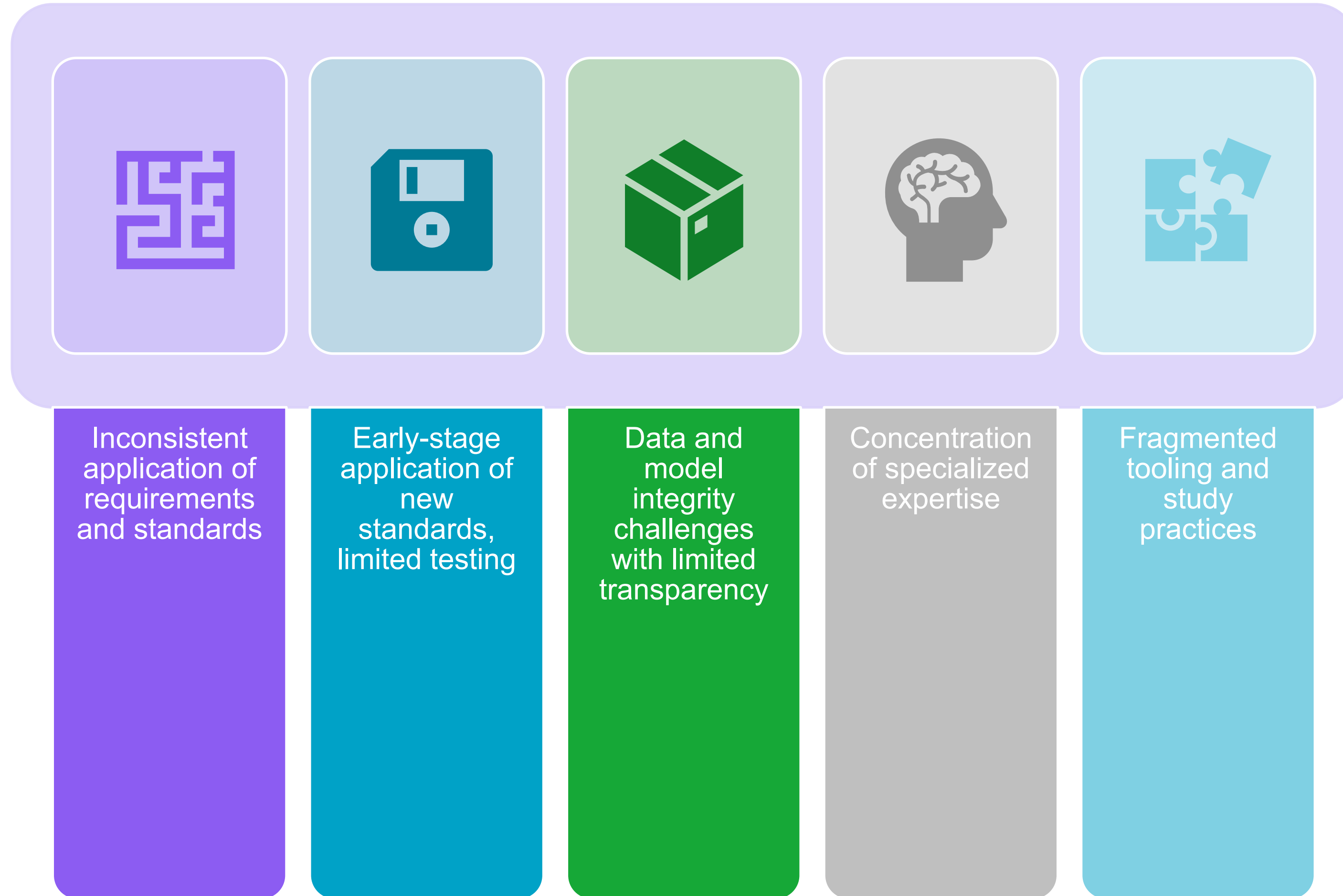
## Threats

-  FRAGMENT
-  DISCOVER (LATE)
-  OVERLOAD
-  MISALIGN

# Strengths



# Weaknesses



# Opportunities



Standardization of interpretations and application



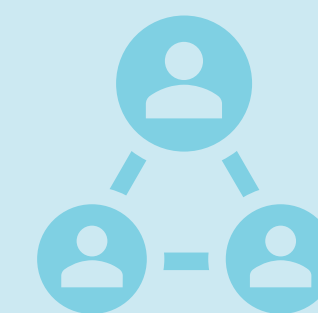
Real-world application of new standards



Data and model quality and governance



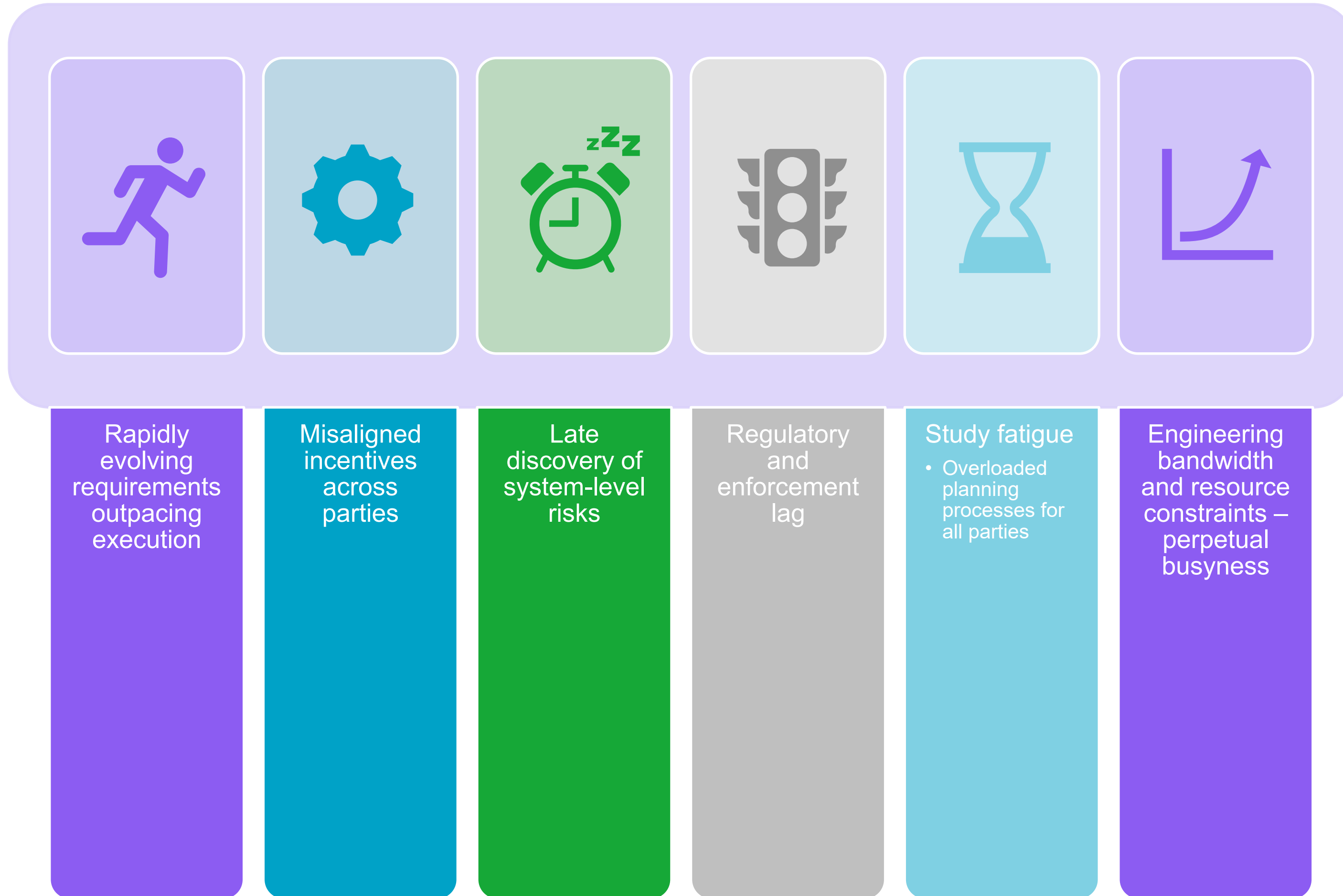
Harmonization of study tools and methodologies will improve scalability and consistency



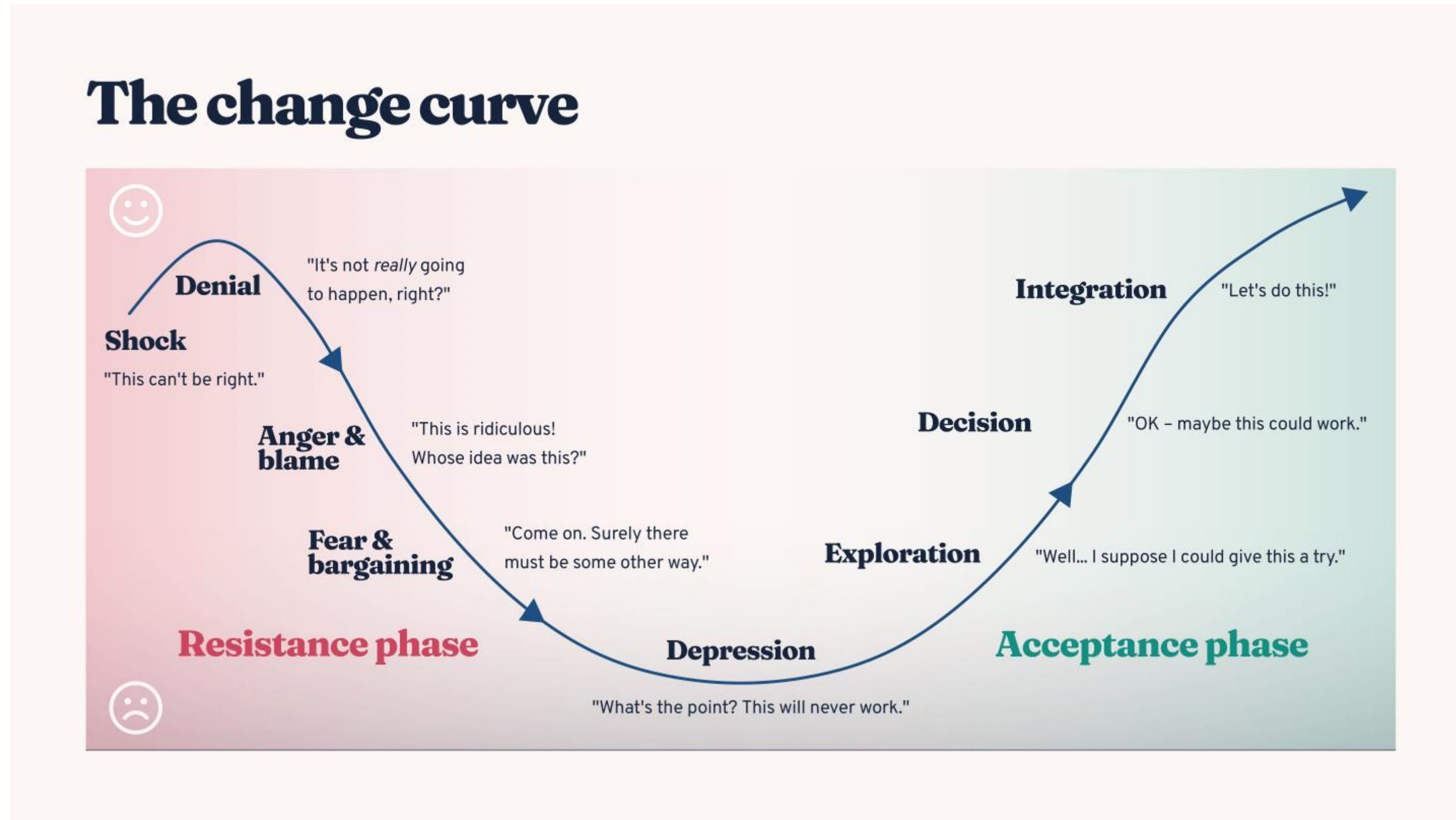
Alignment across parties

- Clear accountability, shared success metrics, and coordinated schedules can improve outcomes

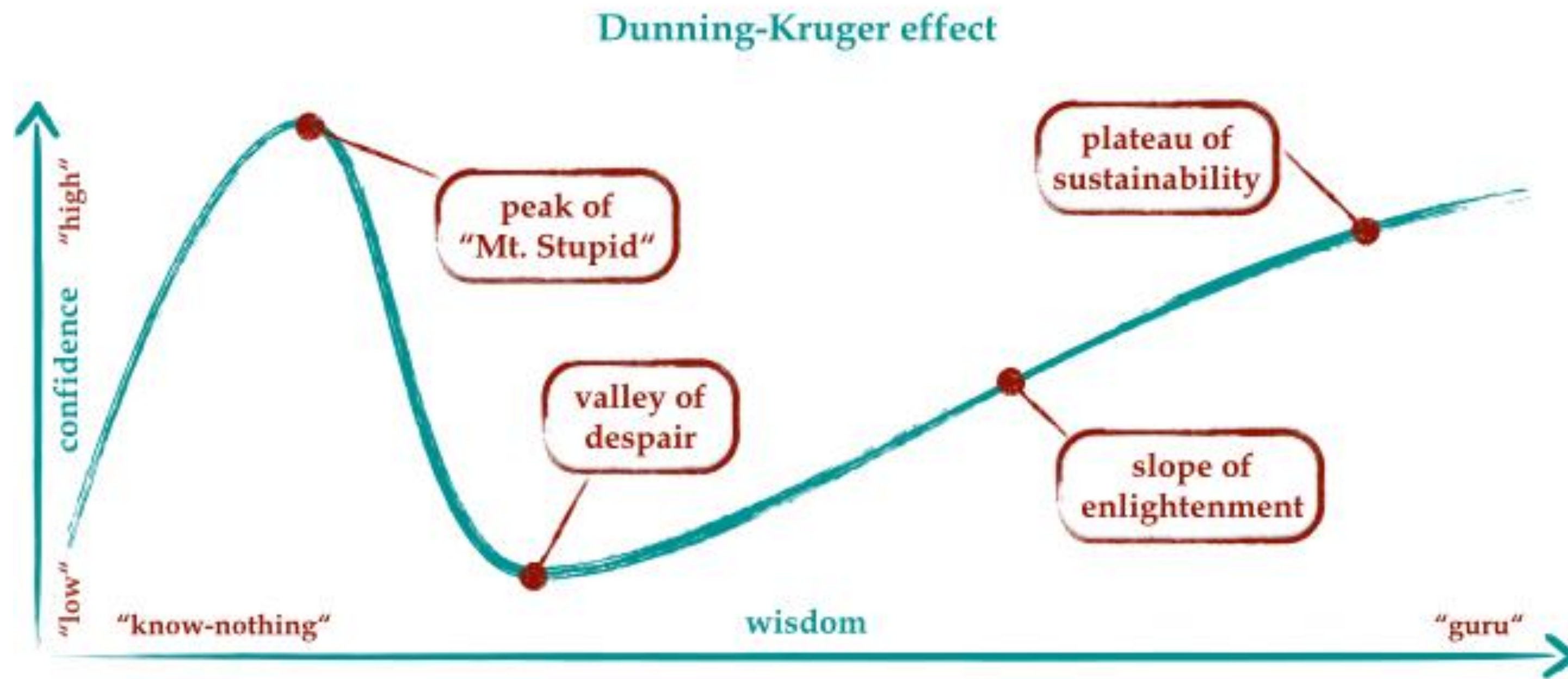
# Threats



# Change Curve



# Dunning-Kruger Effect



<http://www.understandinginnovation.wordpress.com>

# Why This Matters

---

Strengths are real and growing

Weaknesses are understood

Threats are visible

Opportunities are actionable

# Recap

---

## Industry & Context

- Disruptors
- Drivers in Our Space
- Development of a Project

## Industry SWOT

- Strengths
- Weaknesses
- Opportunities
- Threats

## Cognitive Factors

- Adapting to Change
- Dunning-Kruger Effect



# Thank you!

Contact:

[Katie.Iversen@aes.com](mailto:Katie.Iversen@aes.com)