



NYISO's Proposed Long-Term Regional Transmission Planning Process

Supriya Tawde

Manager, Transmission Integration

ESIG Spring Conference 2026

Wednesday March 18, 2026

Comprehensive System Planning Process (CSPP)

■ Reliability Planning

- Quarterly Short-Term Assessment of Reliability (STAR)
- Bi-annual Reliability Needs Assessment (RNA)
- Bi-annual Comprehensive Reliability Plan (CRP)

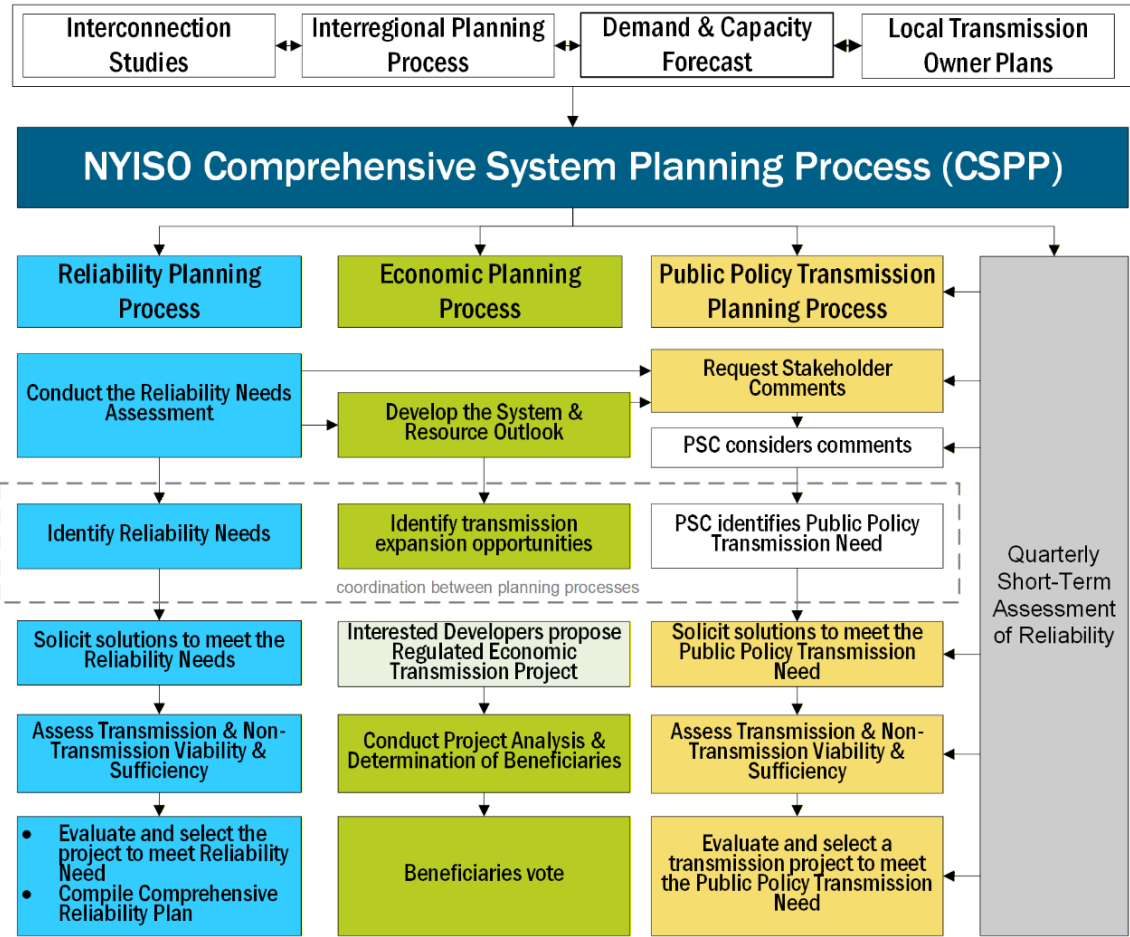
■ Economic Planning

- System and Resource Outlook (Outlook)
 - Identifies opportunities for transmission investment

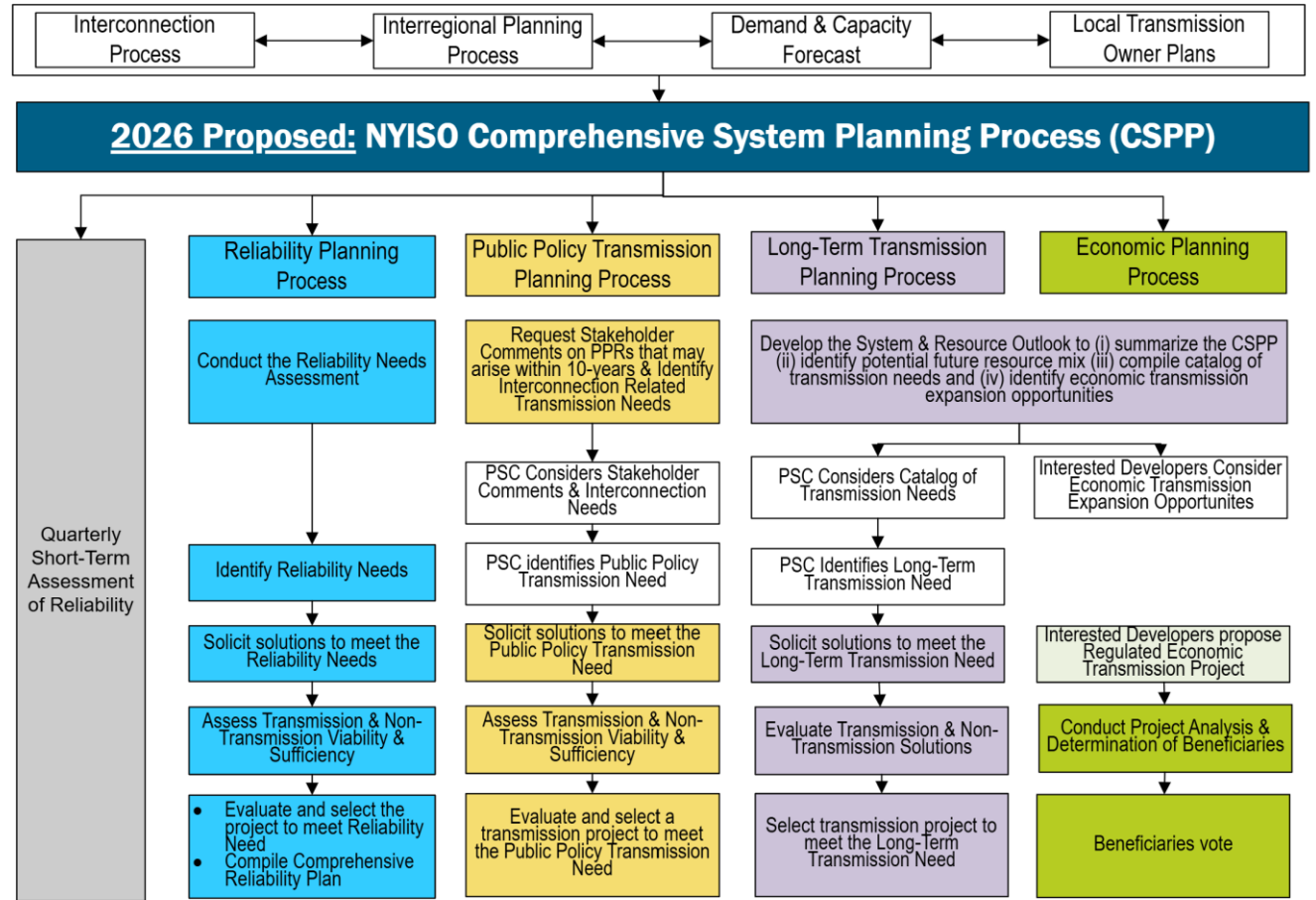
■ Public Policy Transmission Planning

- Bi-annual process that enables New York State to identify transmission investment needs to support public policy requirements
 - NYISO administers a competitive process to select solutions

Current CSPP Structure



Proposed CSPP Structure





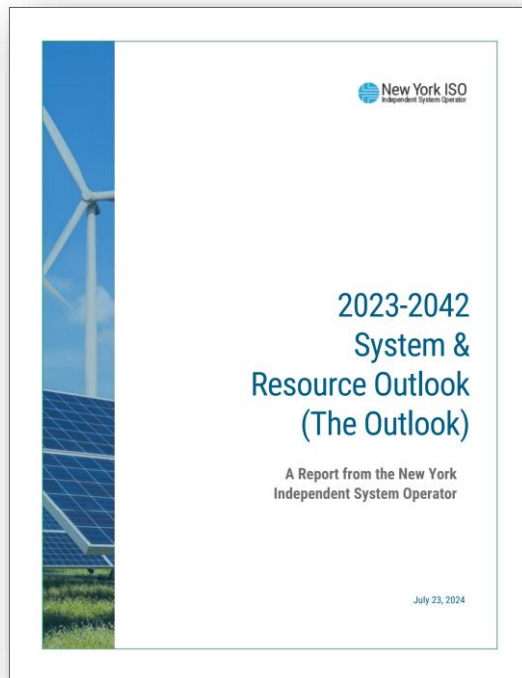
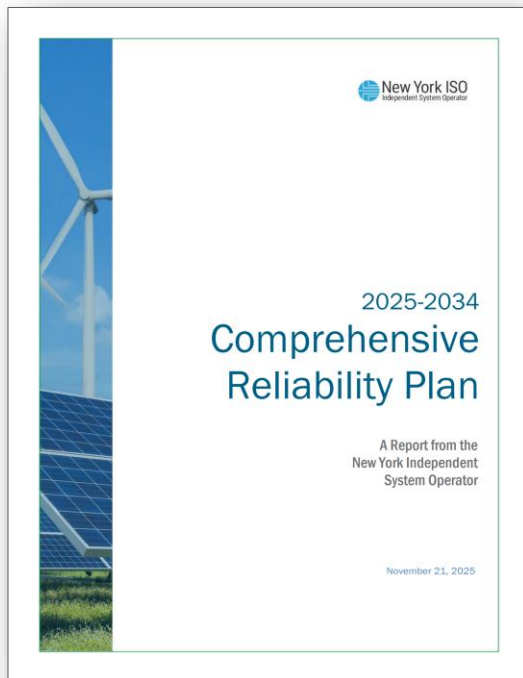
Evaluation and Selection Metrics

- Evaluation metrics set forth in the NYISO's tariff will be considered to evaluate and identify the more efficient or cost-effective transmission solution to satisfy an identified Long-Term Transmission Need
- NYISO will apply the following metrics (Benefits as per Order 1920) for purposes of selecting a more efficient or cost-effective transmission project
 - Avoided or Deferred Reliability Transmission Facilities and Aging Infrastructure
 - Reduced LOLE or reduced planning reserve margin
 - Production cost savings
 - Reduced transmission losses
 - Reduced congestion due to transmission outages
 - Mitigation of extreme weather events and unexpected system conditions
 - Capacity cost benefits from reduced peak energy losses

Evaluation and Selection Metrics (Cont.)

- **NYISO will apply additional metrics based on the particular Long-Term Transmission Need to all or a subset of projects for purposes of selecting a more efficient or cost-effective transmission project**
 - Capital Cost estimates
 - Quantitative and Qualitative evaluation of any voluntary cost cap
 - Property rights, or ability to obtain the property rights, required to implement the project
 - Delay in constructing the proposed project
 - Operability (during construction and life of project)
 - Expandability
 - Performance
 - NYPSC Criteria
 - Impact on transfer limits
 - Cost per MW ratio (the capital cost by the MW value of increased transfer capability)
 - Deliverability
 - LBMP
 - Emissions
 - Other metrics, as needed

Recent Planning Studies & Reports



Our Mission and Vision



Mission

Ensure power system reliability and competitive markets for New York in a clean energy future



Vision

Working together with stakeholders to build the cleanest, most reliable electric system in the nation

