



energy™



Mike Simpson  
[mike@ON.energy](mailto:mike@ON.energy)

# Proven Technology Foundation

---

3 GW+

Operating & Under  
Construction

---

10+ GW

Production Capacity

---

75+

Projects Across  
Americas

---

>99.9%

Uptime Performance

---

20 Yr

Tier-1 Component  
Warranties

---

U.S.

Manufacturing, ITC  
eligible



# Converging Power Requirements

Unprecedented Scale

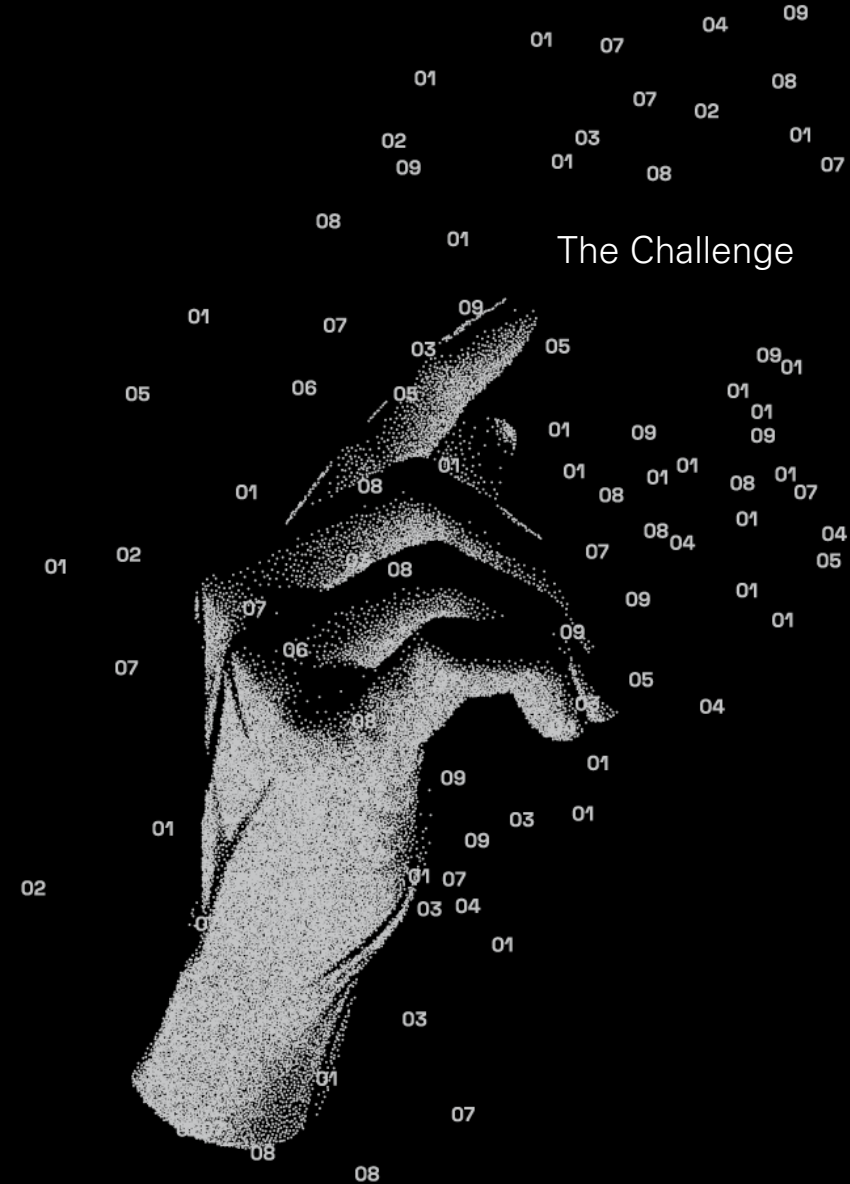
Voltage Ride-Through

Low Tolerance for Interruption

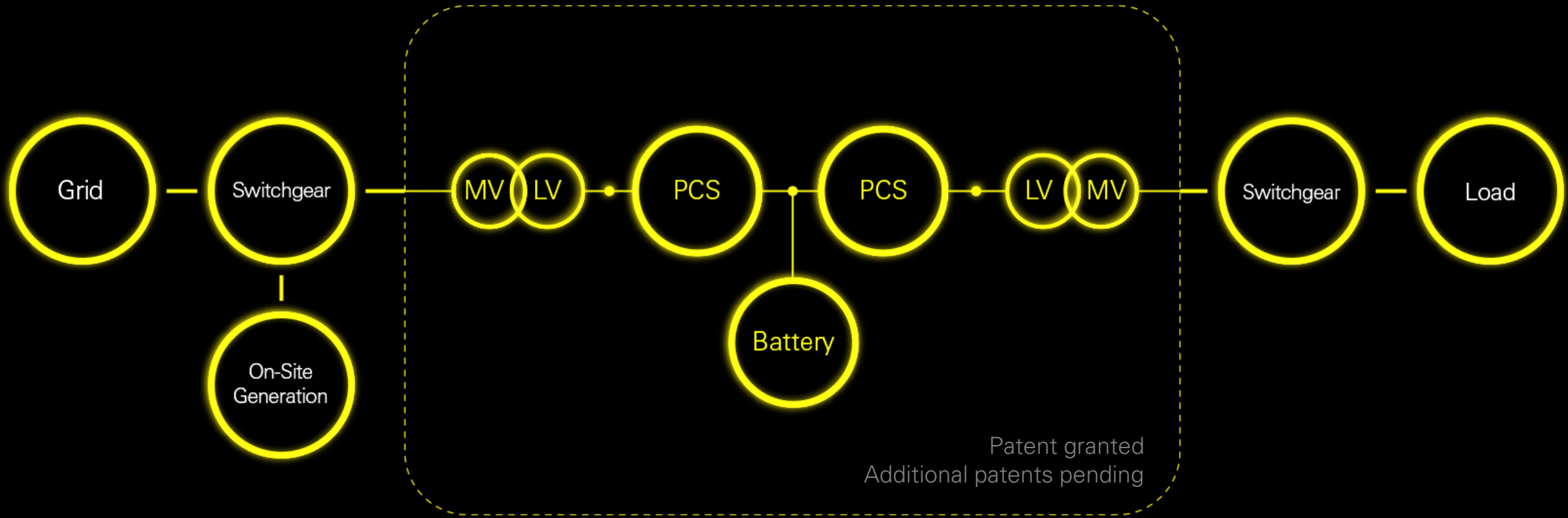
Large Load Flexibility

Rapid Load Transients

Ramp Rate Control



# Perfect Power for AI Factories



Grid power flows through back-to-back bidirectional inverters for decoupled power supply.

Double-conversion isolates sensitive loads from grid disturbances entirely

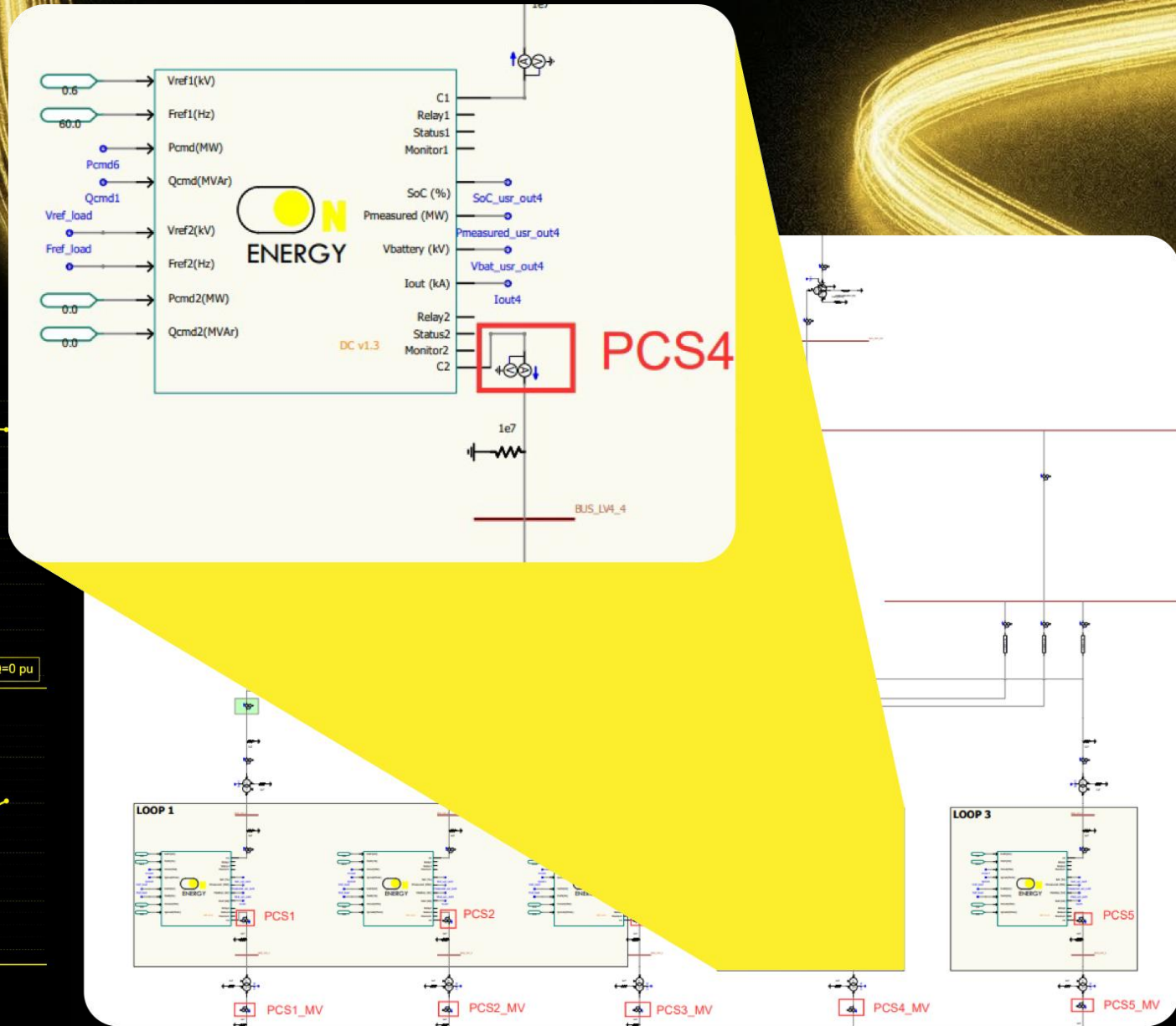
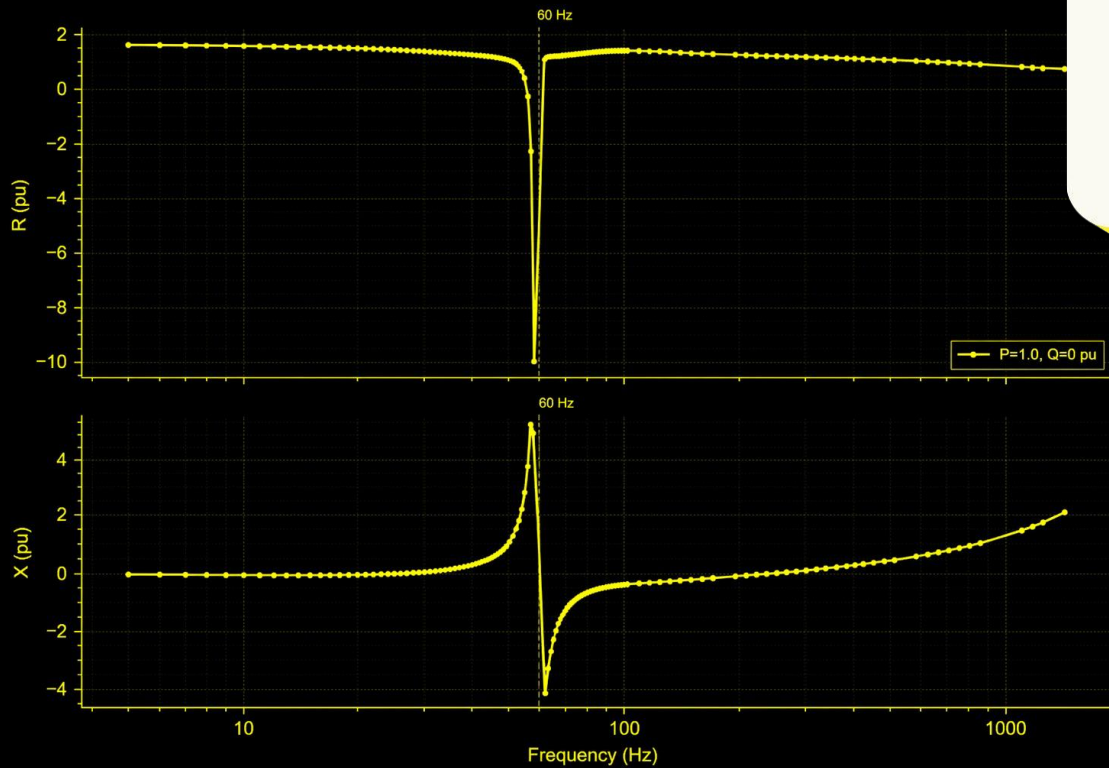
The batteries are always on resulting in Zero-Flicker with Zero-Transfer time

Reduce grid stress by peak shaving / demand response

N+1 to 2N+1 redundancy assures resilient operations (Tier III +)

# Model Alignment

- ⚡ Load-flow + EMT Models Reviewed and Approved (ERCOT + Oncor)
- ⚡ Impedance Scanned for Stability



# Proven at the National Laboratory of the Rockies



7 MW

Grid  
Simulator

20 MW

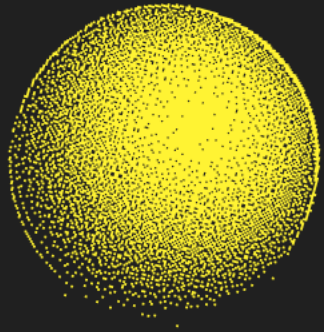
Load Simulator  
(400  $\mu$ s)

3.2 MW

Full Branch  
Under Test

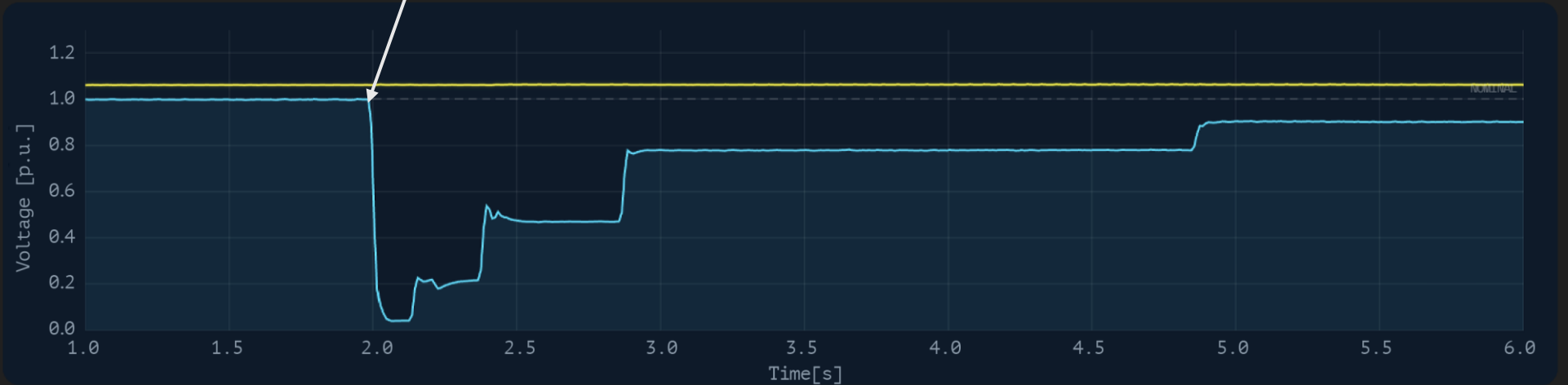
13.2 kV

Medium Voltage  
Connection



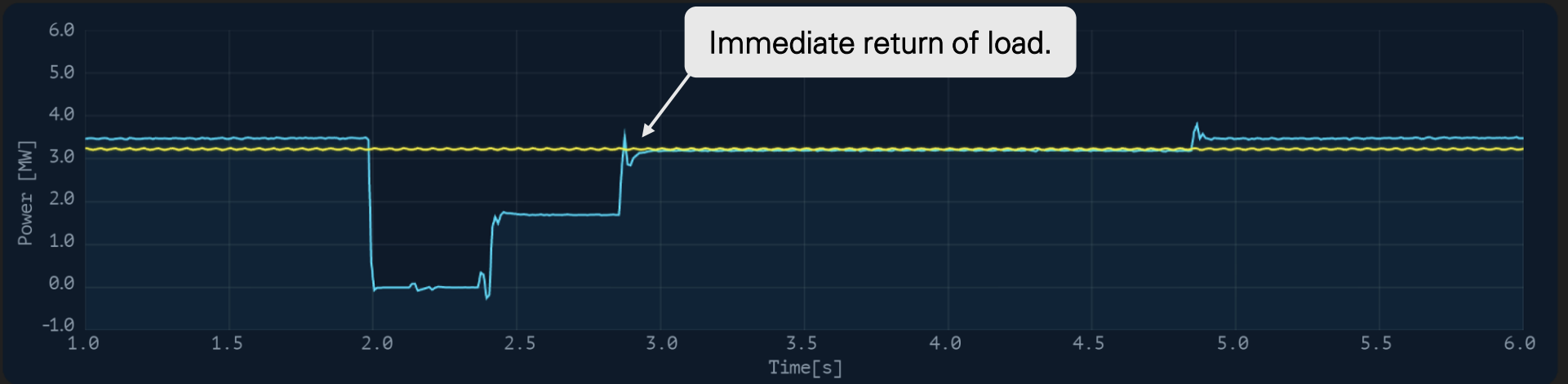
Voltage Fault

A full voltage fault hits the grid. The compute never notices.



— GRID VOLTAGE (P.U.)      — LOAD VOLTAGE (P.U.)

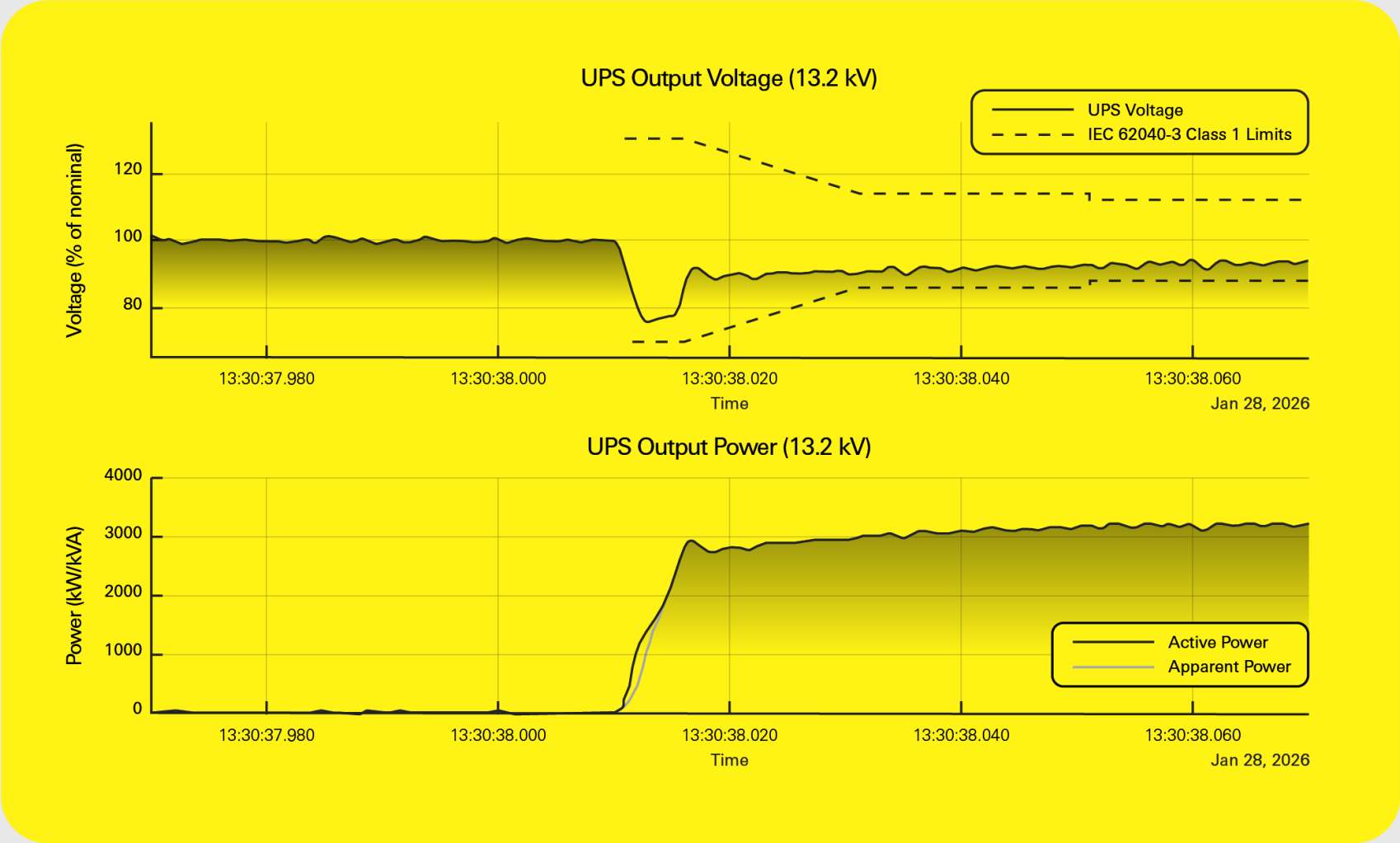
Immediate return of load.



— GRID POWER (MW)      — LOAD POWER (MW)

# UPS Power Quality Results

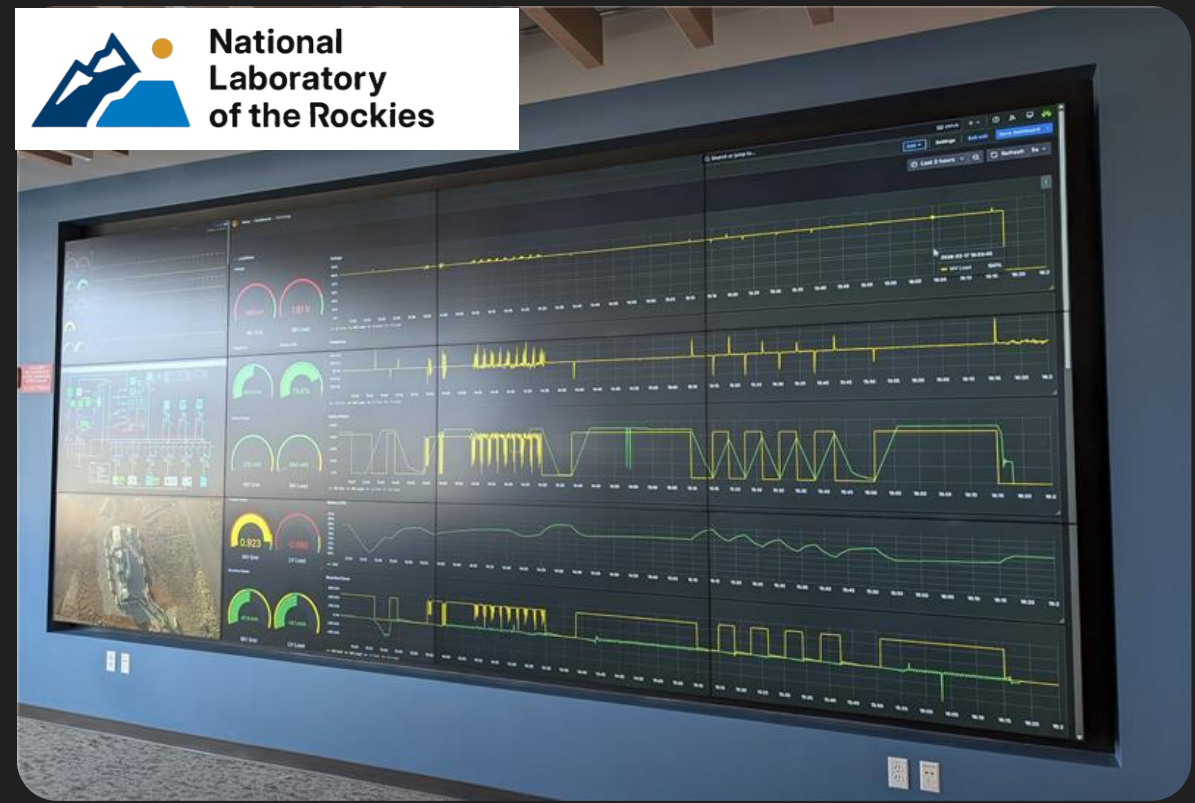
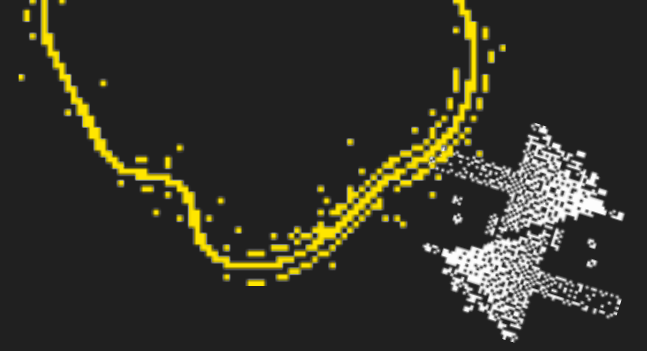
All IEC 62040-3 Class 1 requirements met or exceeded

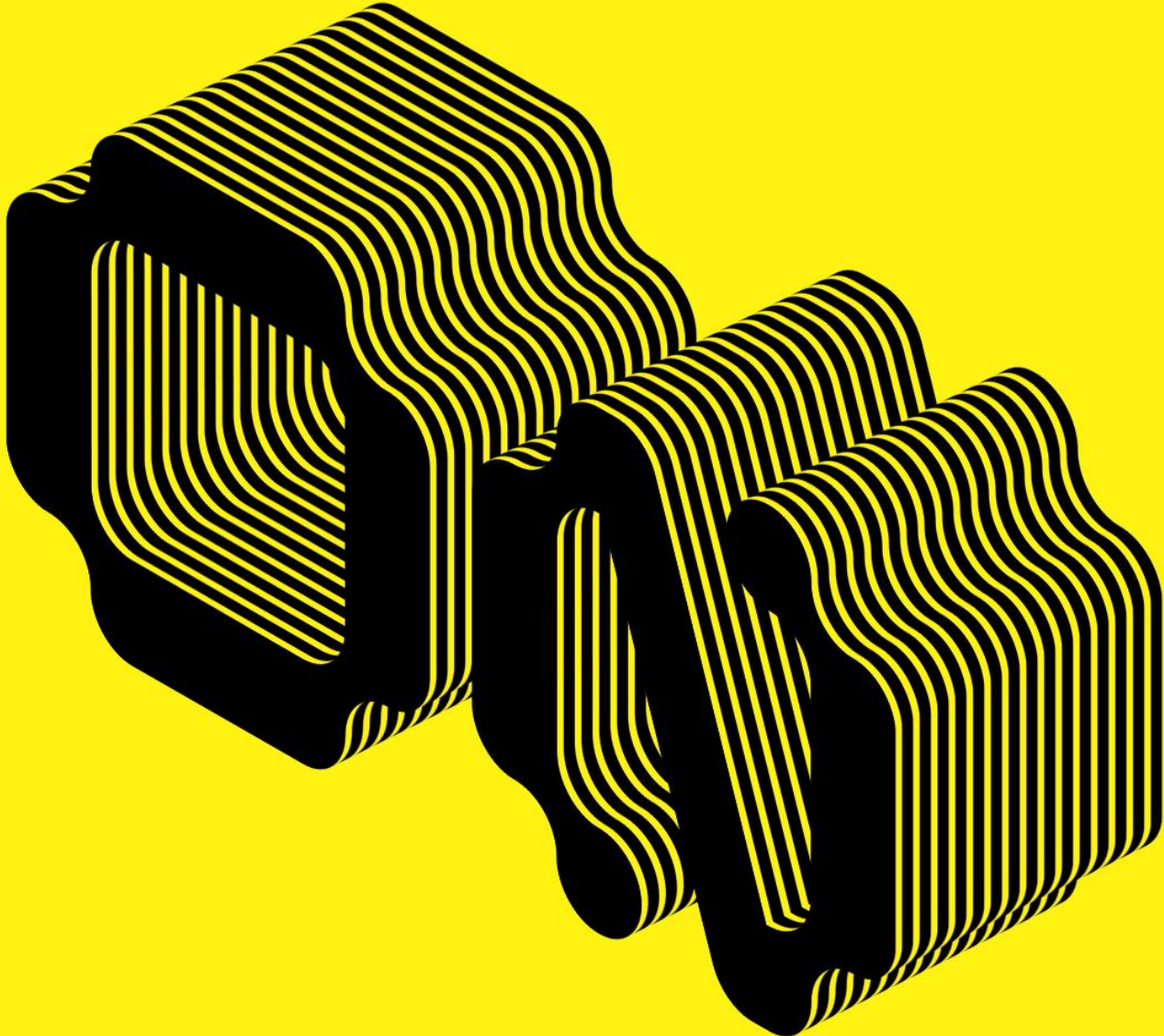


# Real loads, real voltage ride through

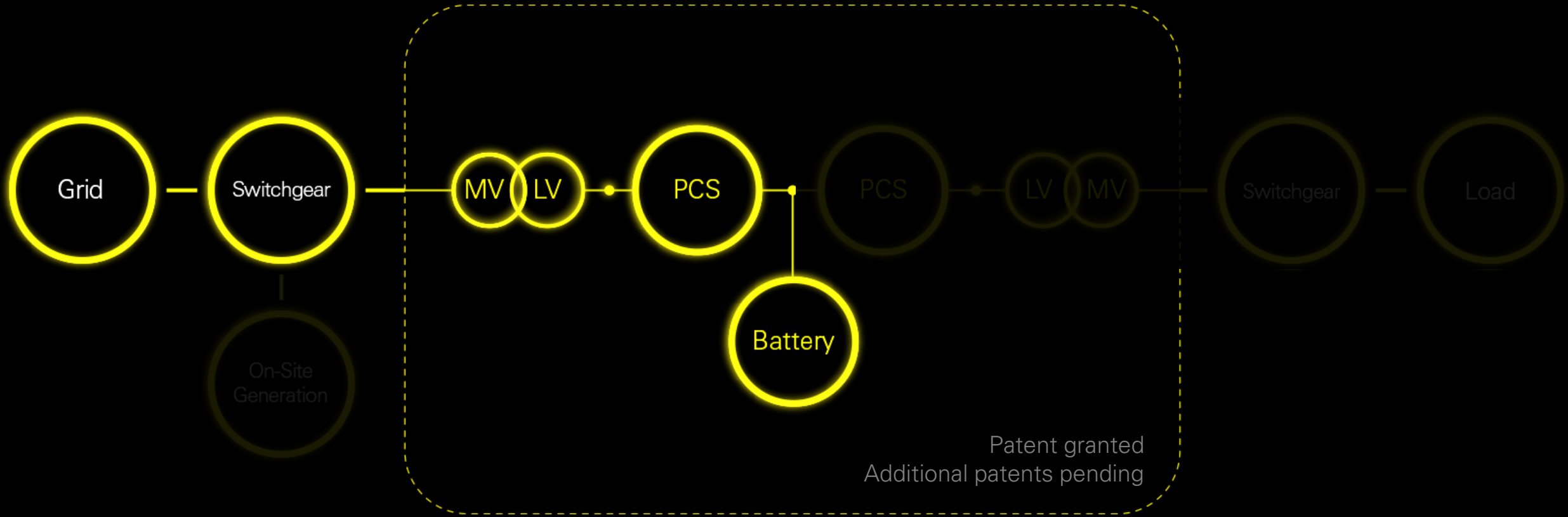
Real data. Full-scale Testbed.

Simultaneous AI load profile during low voltage ride through





# Beauty in Simplicity

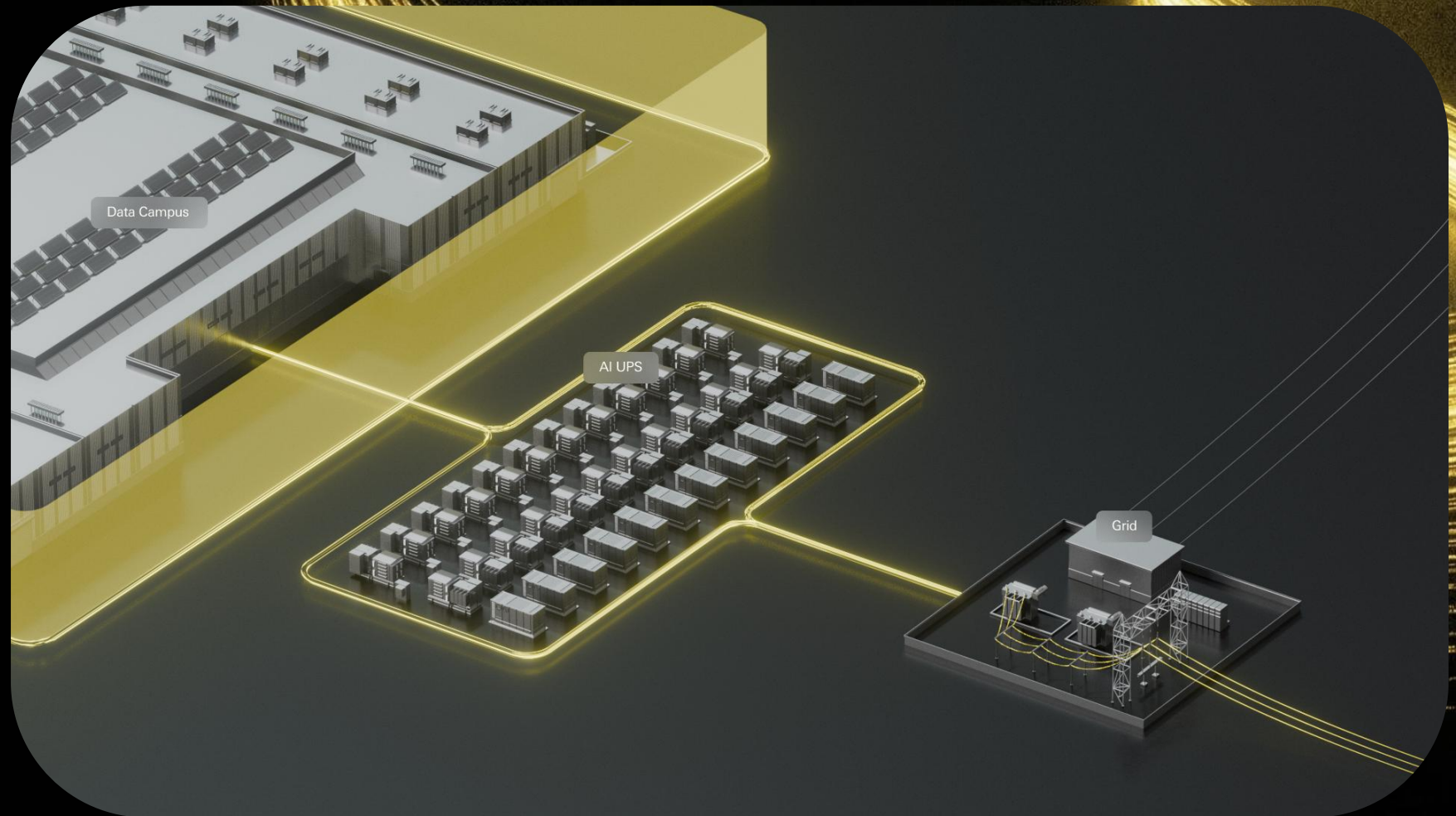


To the grid, the *whole* site becomes a BESS equivalent that only charges...

*"Armed with new batteries and winterized plants, ERCOT survives Fern" – Latitude Media*  
*"BESS buildout crosses 15 GW in ERCOT in Q1 2026" – Modo Energy*

# Grid-Safe Architecture

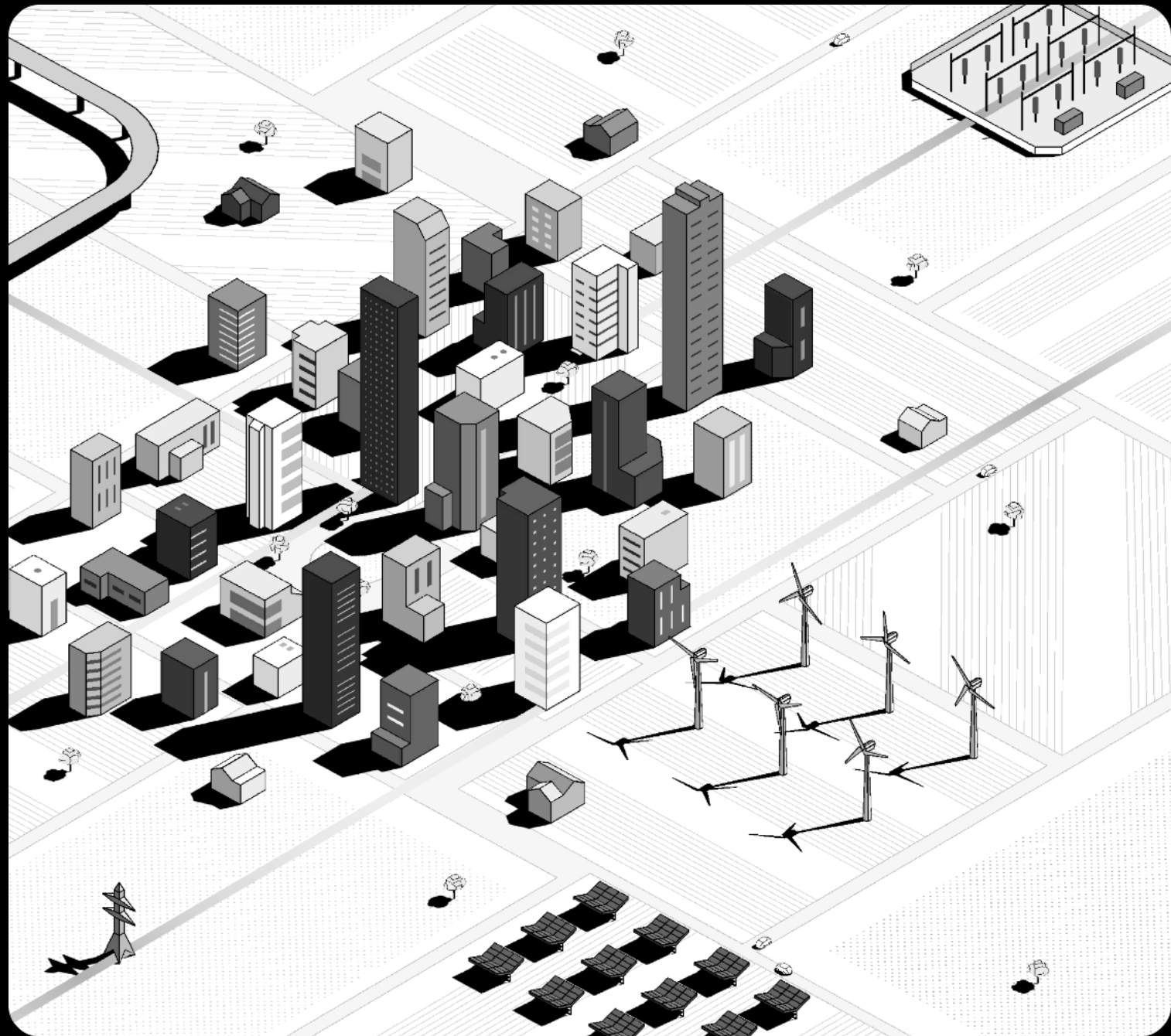
- AI UPS has been approved for a 500+ MW LEL in ERCOT / Oncor territory.
- Commissioning is starting Q2 2026, and the whole campus will end up being 1.5GW+ of total load.



Technical Benefits for the grid

# AI UPS™ makes data centers Grid-Safe

- Voltage Ride Through
- Ramp-Rate Limits
- Peak shaving when the grid is at capacity
- Interconnection speed



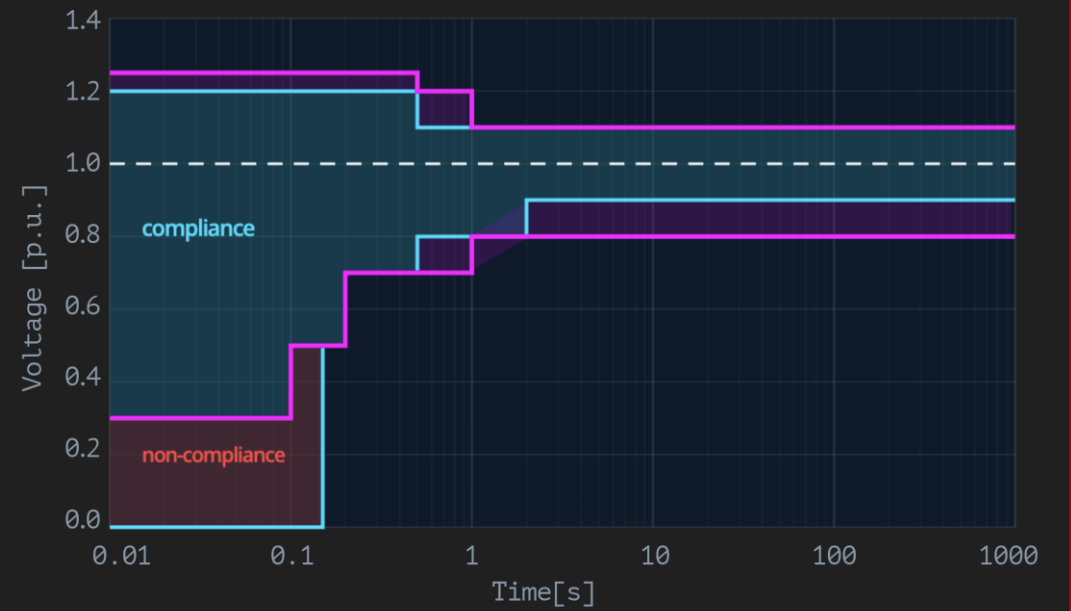
# Exceeds ERCOT Compliance

● AI UPS™ (MV UPS)



■ EXCEEDS COMPLIANCE    — AI UPS™    — ERCOT LL    - - - - NOMINAL

⊘ TRADITIONAL LV UPS – NON COMPLIANT



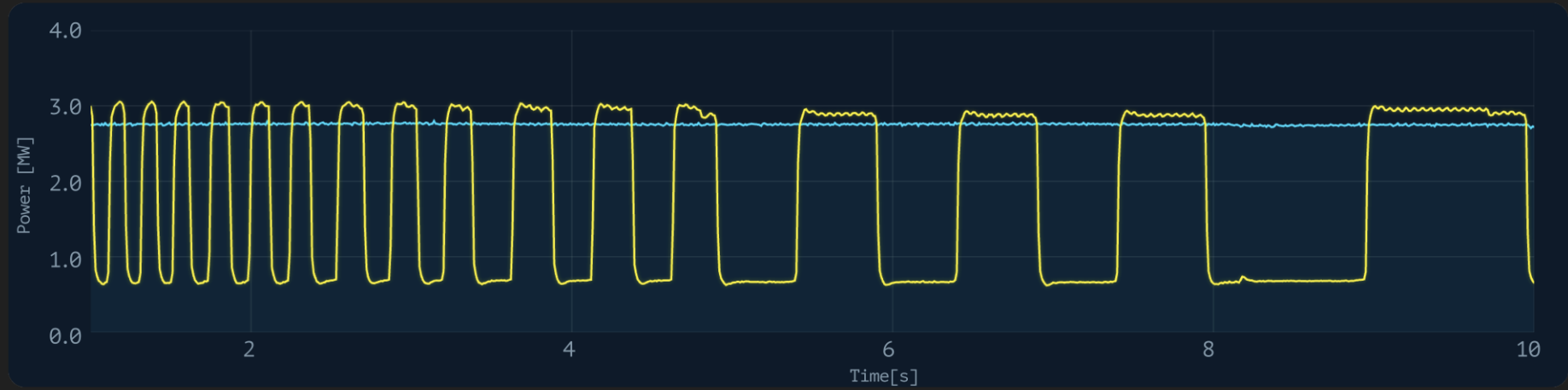
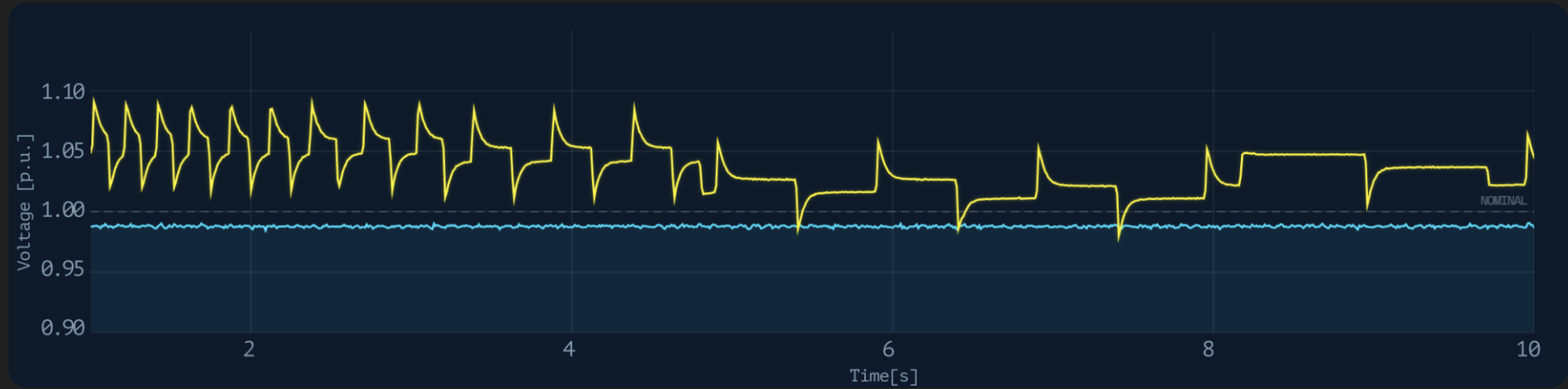
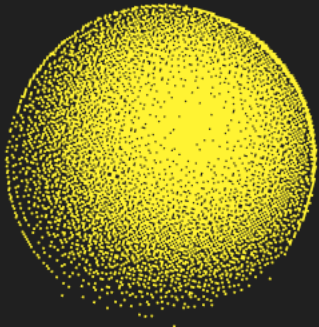
■ NON-COMPLIANCE    — LV UPS    — ERCOT LL    - - - - NOMINAL

AI UPS™

# NATIONAL LABORATORY OF THE ROCKIES

## Proven GPU Suppression

GPUs spike repeatedly. The grid never notices.



Real data. Full-scale Testbed